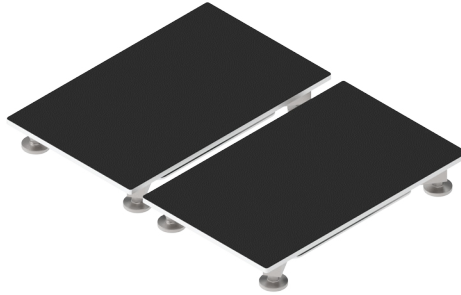


FORCEDECKS

DUAL FORCE PLATE SYSTEM

TECHNICAL SPECIFICATIONS

MODEL : **FDLITE**



FORCE PLATFORM

MODEL NAME	FDLite
QUANTITY	2 plates per system
DIMENSIONS (PER PLATE)	300 mm (11.8 in) W x 485 mm (19.1 in) L x 53 mm (2.1 in) H
WEIGHT	9 kg (20 lb) each / 18 kg (40 lb) per pair
SAMPLING RATE	Up to 1,000Hz
CAPACITY	2,000 kg (4,400 lb)
SAFE OVERLOAD	3,000 kg (6,600 lb)
MAXIMUM OVERLOAD	4,000 kg (8,800 lb)
RESOLUTION	c. 15 g / 0.15 N
LINEARITY AND HYSTERESIS	<0.05 % over measuring range

SAFETY SURROUND

MATERIAL	Foam
DIMENSIONS	848 mm (33.4 in) W x 848 mm (33.4 in) L x 53 mm (2.1 in) H
WEIGHT	1.3 kg (3 lb)

ELECTRICAL

POWER	Output 24V from supplied 90-264V PSU
CONNECTIVITY	USB

SOFTWARE SYSTEM REQUIREMENTS

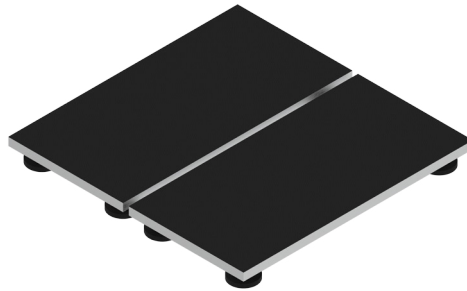
OPERATING SYSTEM	Windows 7 x64 or later
PROCESSOR	Intel i5 / i7 / i9
RAM	8 GB or greater
STORAGE	500 MB minimum for install
PORTS	1 x USB 2.0 / USB 3.0

FORCEDECKS

DUAL FORCE PLATE SYSTEM

TECHNICAL SPECIFICATIONS

MODEL : **FD4000**



FORCE PLATFORM

MODEL NAME	FD4000
QUANTITY	2 plates per system
DIMENSIONS (PER PLATE)	350 mm (13.8 in) W x 700 mm (27.6 in) L x 78 mm (3.1 in) H
WEIGHT	23 kg (51 lb) each / 46 kg (102 lb) per pair
SAMPLING RATE	Up to 1,000Hz
CAPACITY	2,000 kg (4,400 lb)
SAFE OVERLOAD	3,000 kg (6,600 lb)
MAXIMUM OVERLOAD	4,000 kg (8,800 lb)
RESOLUTION	c. 15 g / 0.15 N
LINEARITY AND HYSTERESIS	<0.05 % over measuring range

SAFETY FRAME

DIMENSIONS	820 mm (32.3 in) W x 820 (32.3 in) mm L x 78 mm (3.07 in) H
WEIGHT	10 kg (22 lb)

ELECTRICAL

POWER	Output 24V from supplied 90-264V PSU
CONNECTIVITY	USB

SOFTWARE SYSTEM REQUIREMENTS

OPERATING SYSTEM	Windows 7 x64 or later
PROCESSOR	Intel i5 / i7 / i9
RAM	8 GB or greater
STORAGE	500 MB minimum for install
PORTS	1 x USB 2.0 / USB 3.0